

Exercise 1

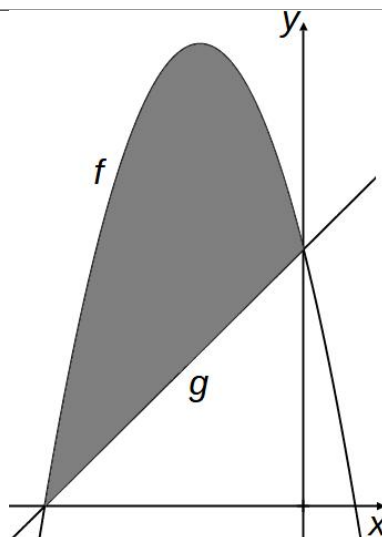
Calc. : ✖

Consider the functions f and g defined by:

$$f(x) = -x^2 - 4x + 5$$

$$g(x) = x + 5$$

The diagram shows the graphs of f and g .



a) **Verify** that the graphs of f and g intersect on the coordinate axes.

2 marks

b) **Write** an integral that gives the area of the shaded region.

3 marks

You do not need to evaluate the integral, only to give an appropriate expression.