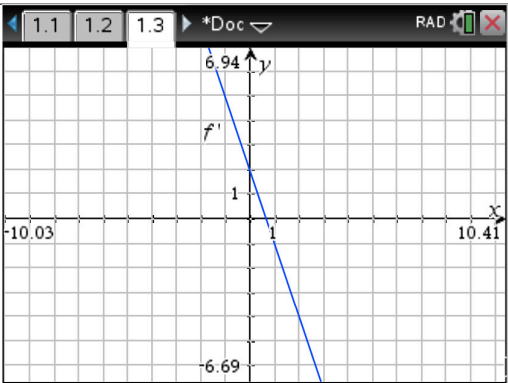


Exercise 1

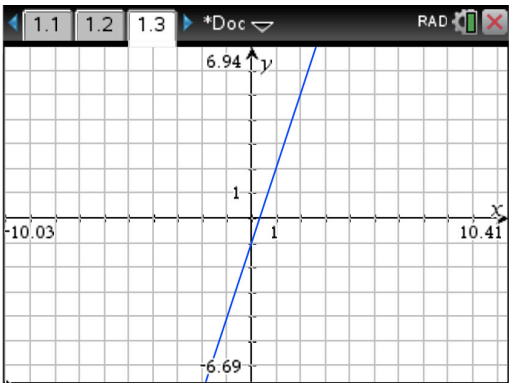
Calc. : ✖

The figure on the right represents the graph of a derivate function  $f'$ .  
Choose among the graphs below the one(s) that could represent the function  $f$ .  
**You must justify your answer carefully, otherwise no points will be awarded.**

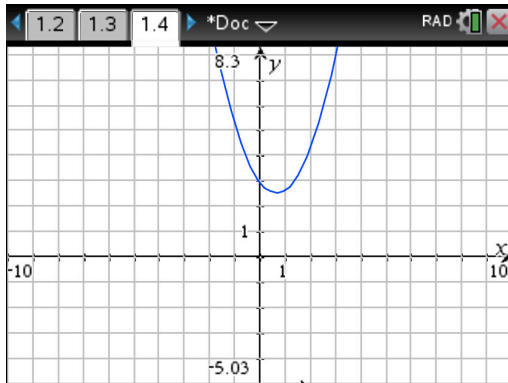
6 marks



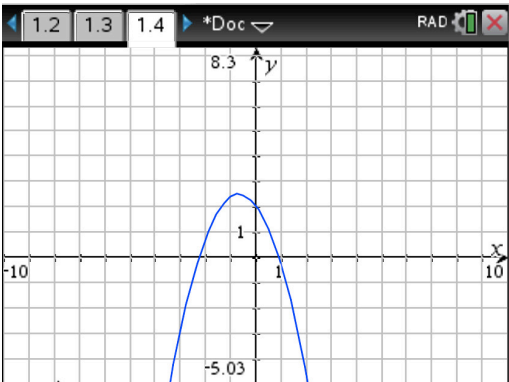
Graph of function  $f'$



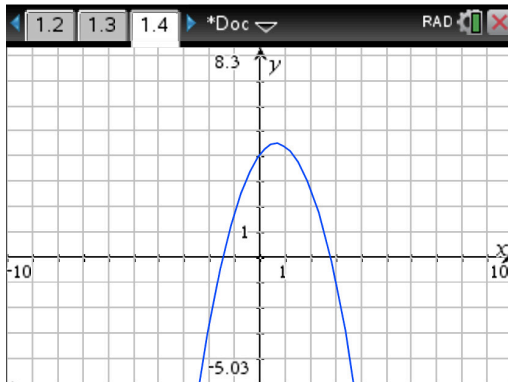
Graph 1



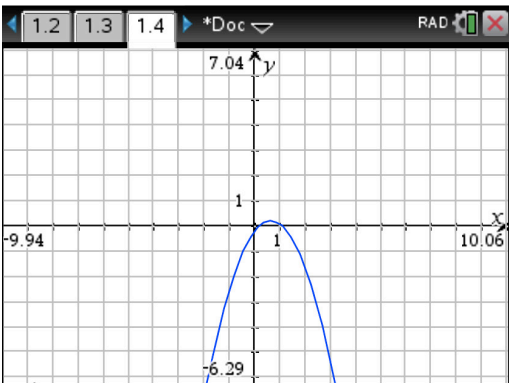
Graph 2



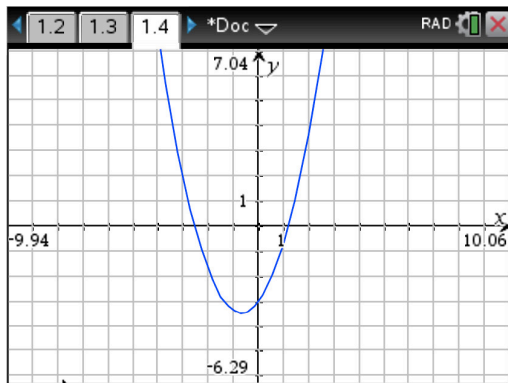
Graph 3



Graph 4



Graph 5



Graph 6