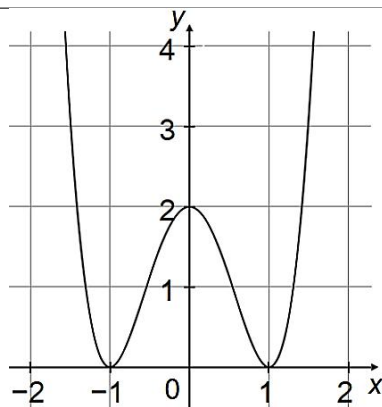


Exercise 1

Calc. : X

The graph of a function f is shown on the right.
For each of the following statements, **state** whether it is true or false.

Justify each response.



a) $f'(0) = 0$

1 mark

b) $f'(x)$ changes sign in the interval $(0.5, 1.5)$, i.e. $0.5 < x < 1.5$.

2 marks

c) The equation $f'(x) = 1$ has only two solutions.

2 marks