

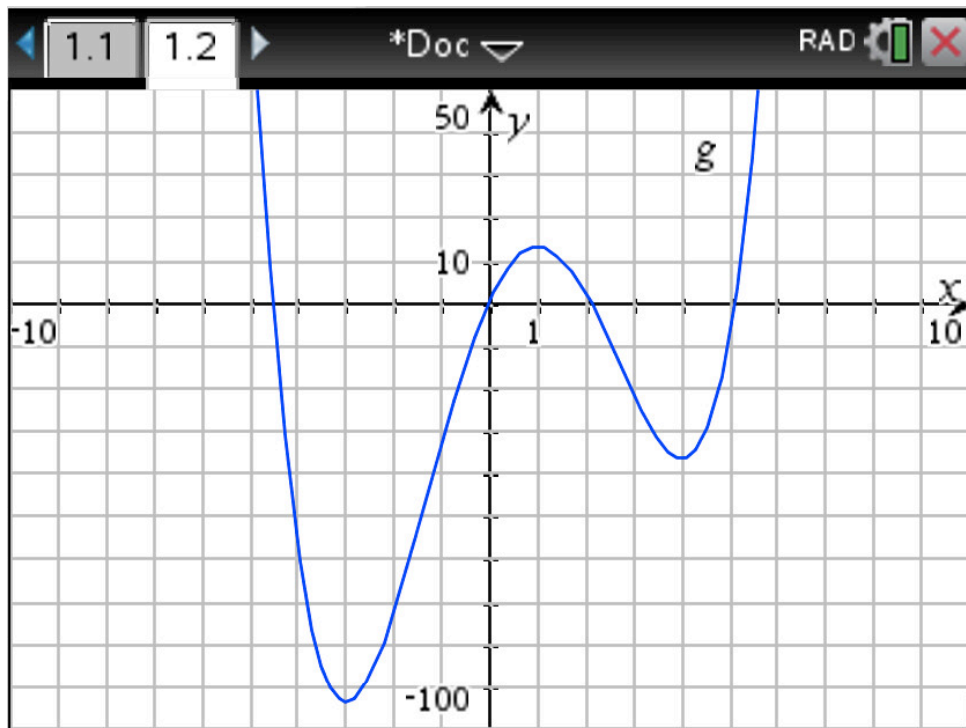
Exercise 1

Calc. : ✓

ANSWER ON THIS SHEET AND RETURN WITH OTHER ANSWER SHEETS

1. The figure represents the graph of a function $g(x)$. Sketch a possible graph for the function $g'(x)$ on the same grid.

4 marks



2. The figure represents the graph of a derivate function $f'(x)$. Sketch a possible graph for the function $f(x)$ on the same grid.

4 marks

