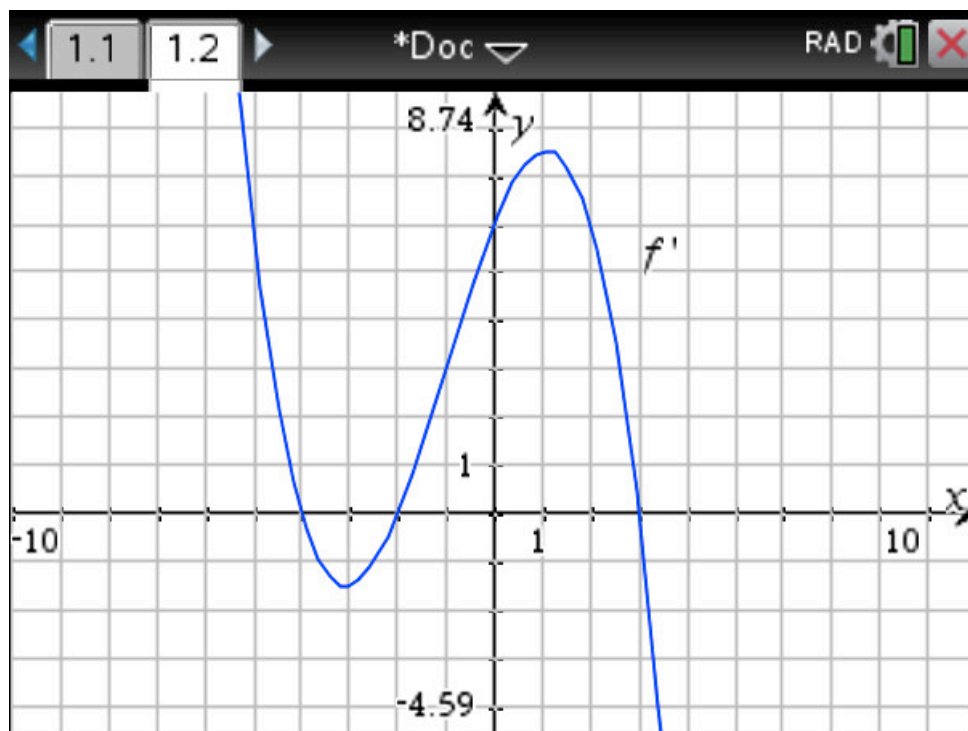


Exercise 1

Calc. : ✓

The figure represents the graph of a derivative function f' of a function f .



1. Give the x -coordinates of the extrema of f and state their nature. 6 marks
2. From the graph of f' find the slope of the tangent to the graph of f at $x = -1$. 2 marks
3. Find the solutions for $f'(x) = 6$. 3 marks
4. The graph of function f passes through point $P(0, 1)$. Find the equation of the tangent to the graph of f at point P . 4 marks